



# Advisory Neighborhood Commission 2A

*"Serving the Foggy Bottom and West End communities of Washington, D.C."*

June 20, 2014

Rabbiah Sabbakhan, Director  
Department of Consumer and Regulatory Affairs  
1100 4<sup>th</sup> Street, S.W.  
Washington, DC 20024  
[dcra@dc.gov](mailto:dcra@dc.gov)

RE: Permit tracking #95305

Dear Director Sabbakhan,

At its regular meeting on June 18, 2014, Advisory Neighborhood Commission 2A ("**ANC 2A**" or "**Commission**") considered the above-referenced matter. With seven of eight commissioners present, a quorum at a duly-noticed public meeting, the Commission approve the following resolution by a vote of (7-0-0).

The commissioners of ANC2A wish to inform you of our enthusiastic support for the award-winning "Arts in Foggy Bottom" outdoor sculpture biennial, one of Washington's leading programs for presenting public art, which is back for its fourth season. The exhibition, "Sculpted: Histories Revealed," features 16 contemporary sculptures by 15 artists, most of whom are nationally recognized. The works – mainly presented on private properties – respond to the spaces, personae and stories of the historic Foggy Bottom neighborhood.

The exhibition was selected by 2014 curator and public art expert Deirdre Ehlen MacWilliams, in partnership with Arts in Foggy Bottom founders and co-directors Jacqueline Lemire, Jill Nevius, and Mary Kay Shaw, with support from the Arts in Foggy Bottom Advisory Committee.

The Foggy Bottom biennial outdoor sculpture exhibition can be viewed in front of homes in historic Foggy Bottom between 24th and 26th Streets, N.W., and H and K Streets, N.W., day and night through Saturday, October 25th.

There is one public art project by artist Graham Caldwell which Arts in Foggy Bottom would like to site on a street light pole at the corner of 26th and I Streets, N.W. ANC2A fully supports their request to obtain a permit for this installation.

See the attached diagram detailing the art work and installation.

Commissioners Patrick Kennedy ([Patrick.Kennedy@anc.dc.gov](mailto:Patrick.Kennedy@anc.dc.gov)) and Asher Corson ([lashercorson@gmail.com](mailto:lashercorson@gmail.com)) are the Commission's representatives in this matter.

ON BEHALF OF THE COMMISSION.



# Advisory Neighborhood Commission 2A

*"Serving the Foggy Bottom and West End communities of Washington, D.C."*

Sincerely,

Patrick Kennedy  
Chairperson

cc: Jackie Lemire, Arts in Foggy Bottom

cc: Asher Corson, ANC 2A03

Enclosure:

Spec Sheet

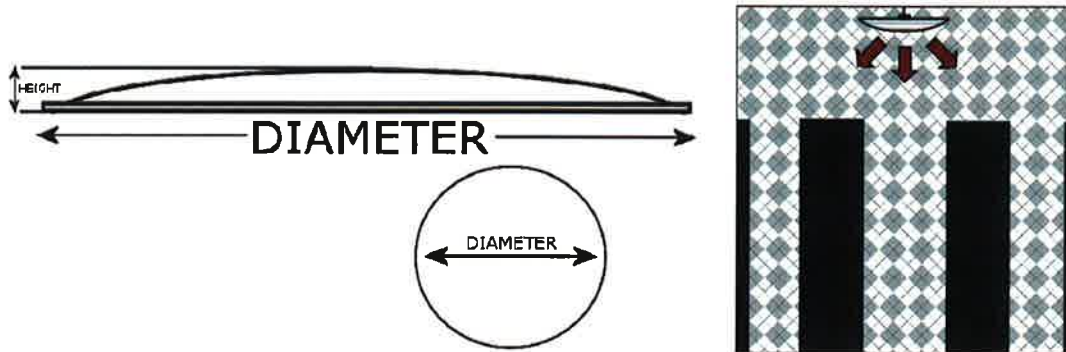
Site Plan

Rendering



- Our exclusive Duramir unbreakable lens.
- For indoor or outdoor use in all weather conditions.
- Provides 160° viewing for corner or overview use.
- Ideal for Retail, Warehouse, Convenience Stores, Production Facilities, Gas Stations, Schools, Hospitals, Prisons, Military Applications, Public Buildings
- Can be wall or ceiling mounted. Mounting hardware included. With adjustable swivel. Easy to install.
- One inch of mirror diameter equals one foot of effective viewing area. (26" Convex would be visible from up to 26')
- Shatterproof, impact proof, crack proof duramir lens.
- Heavy duty stainless steel backing.
- Made in the USA

For the ultimate in durability and strength, our exclusive Duramir with unbreakable lens and heavy duty stainless steel backing will excel in the most demanding conditions. An excellent alternate to polycarbonate - equal in strength at a fraction of the cost.



<b>Indoor Models</b>				
<i>MODEL #</i>	<i>DIAMETER</i>	<i>DIAMETER INCL. TRIM</i>	<i>HEIGHT/DEPTH</i>	<i>SHIP WEIGHT</i>
SEC-PRM-13-SB	13.125"	13.135"	1.125"	5 lbs.
SEC-PRM-18-SB	17.125"	17.135"	1.875"	8 lbs.
SEC-PRM-26-SB	25.125"	25.135"	2.5"	11 lbs.
SEC-PRM-30-SB	29.25"	29.35"	2.625"	17 lbs.
SEC-PRM-36-SB	35.25"	35.35"	2.357"	32 lbs.



Made in the USA



- Standard on all 12", 13", 18" and 12" x 18" convex mirrors
- Heavy duty outdoor rated stainless steel

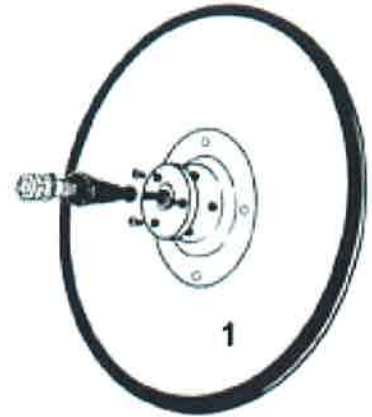
## Kit 'A' Includes:



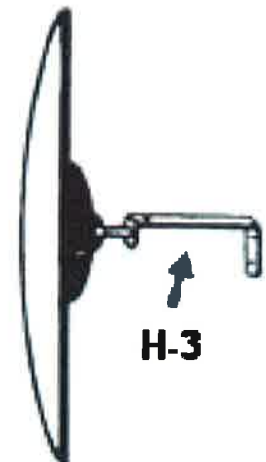
(1) SHP-1



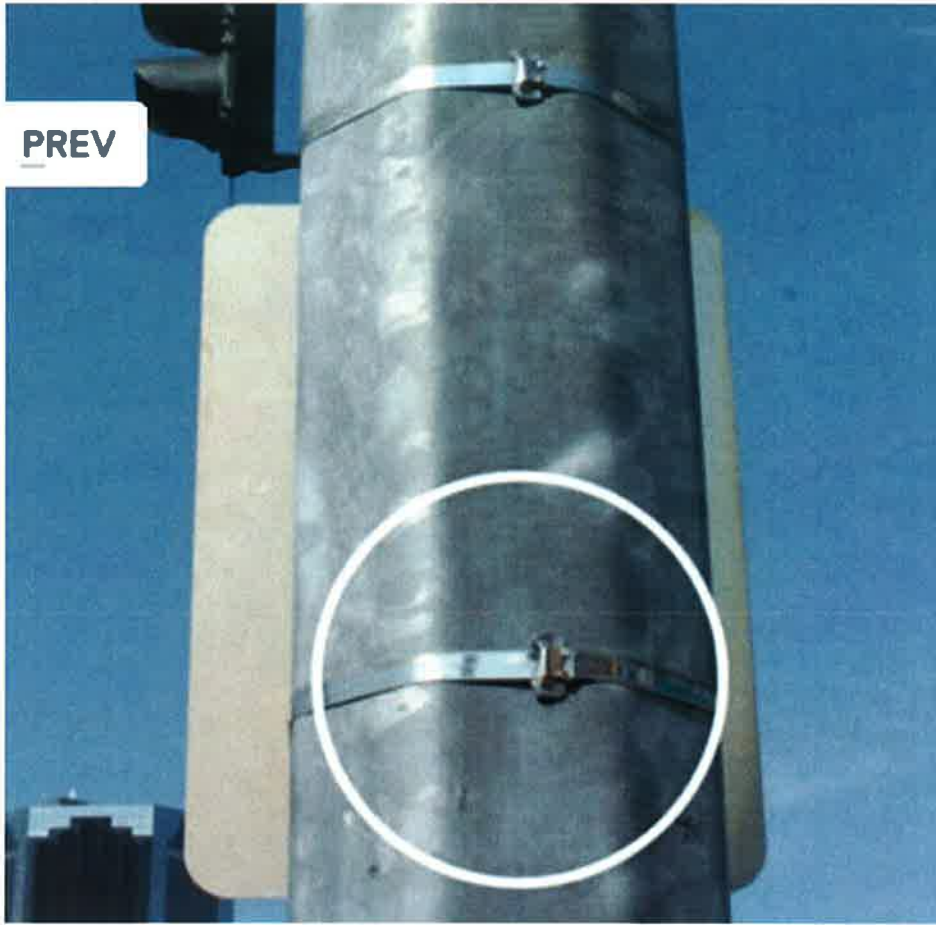
(1) H-3



1. Attach H-3 "J" bracket to wall or ceiling (Screws and/or anchors for mounting of H-3 not included)
2. Slide ball stub under cover of SHP-1. Screw ball cover into mounting base on back of mirror. DO NOT over-tighten screws as they will need to be loose to properly adjust mirror when attached to bracket.
3. Unscrew bolt from SHP-1 along with (1) large washer, put threaded end of SHP-1 through appropriate hole on H-3 and place washer and bolt onto threaded end of SHP-1.
4. From front adjust mirror accordingly to provide best angle of viewing area, once desired position is achieved tighten screws in SHP-1 to lock mirror into fixed position.



There is no express or implied warranty as to the use of this mirror for any particular purpose.

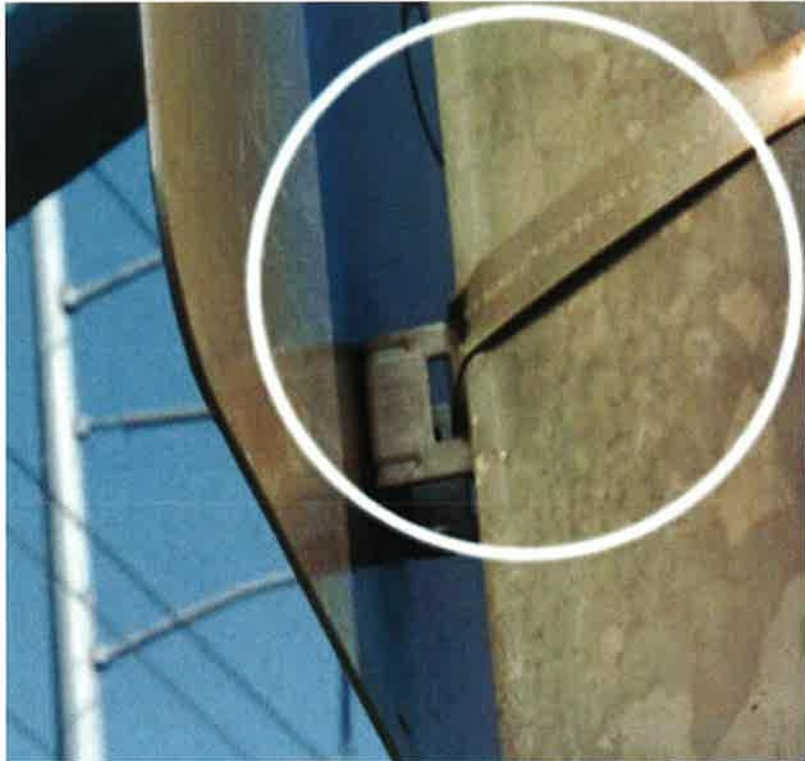


**Strapping Items to a pole**  
Image 3 of 5

**NEXT**

**CLOSE X**

**PREV**



**Strapping signs to a post  
or mount**  
Image 4 of 5

[NEXT](#) [CLOSE](#) **X**

0051



